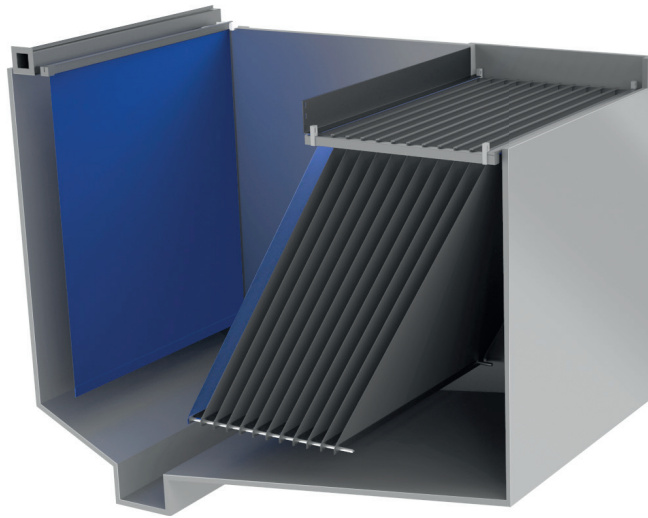


# Lamella separators



## PRODUCT DESCRIPTION

Typically, HST lamella separators are installed in stormwater retention tanks and wastewater treatment plants. Sediments and sludge are efficiently separated from the stormwater and combined sewage water. The solid particles in the liquid settle on the sloped lamellas and slide along the smooth surface towards the floor. The solids settle on the floor below the lamellas and can be removed for disposal by means of a water jet after the tank has been emptied. Thanks

to the even inflow distribution to each plate an optimum operation with high output is guaranteed. By installing lamella separators in, for example, storm water tanks an improvement in efficiency is achieved because the area for settlement is considerably increased. The layout of lamella separators is designed to suit the specific application so that optimum customisation and maximum flexibility is guaranteed.

## YOUR ADVANTAGES

- Space and cost saving when compared with conventional tanks and containers
- Very low operating and maintenance costs
- Space saving sedimentation process as the settling surface is many times larger.
- Optimum operation with high output

## USE

- Storage channels for storm water tanks
- Municipal and industrial waste water treatment plants
- Treatment of process water and sewage
- Preparation of potable water and industrial or service water

